

Ἀται Παρθένος

"لحن قيثارة داود للعدراء"

من مقام بياتي

يقال في أعياد وفي تماجيد العدراء

♩=90

7 Ἀ ται παρ θε nos τ̃ βι ἵ οῦ τα ιο
ἔ φ ο οῦ : α ται ψε λετ τ̃ βι ἵ
14 οῦ ὦ οῦ ἔ φ ο οῦ : θα ι ετ χο λη ζεν
21 ζαν ὦ τα τ̃ νιε β n νοῦ β
27 ες σελ σωλ ζεν οῦ θο ἵ ρη τ̃ .
33 Α Δ λα ρι λ κι υ ἔ πι ω ρ π ἵ κα π
41 ἵ τε τε ε κρ θα ρα ε ε ω ψ ἔ βο λ
49 εε χω υ μο ος:

Ἀγαθὴ Παρθένος

2

57 $\text{♩} = 100$

χε ασ οσι ερατς ηχε τ ορ

66

ρω σα πωβω ηαη

72

π ορ ρο

77 **B** $\text{♩} = 90$

αη κ ι η ε πι ηα σ ηα ρ η η κα π

85

η τε τε η κρ θα ρα ε η ω η ε βο λ

93

εη χω η ηο ος

101 $\text{♩} = 100$

χε σοτεη τα ηερι αναρ ρεκ πεκ

110

ηα ηχ αρη πωβω ηπε λα

117

ος ηηη τηρη ητε πε ιω τ

Ἀγα Παρθένος

3

124 **C** ♩=90

ἀγ_ κ_ ι_ υ_ ε_ πι_ υα_ ψουτ_ Ν_ κα_ π

Detailed description: This block contains the first musical staff, starting at measure 124. It features a treble clef, a key signature of one flat (B-flat), and a common time signature (C). The tempo is marked as ♩=90. The staff contains eight measures of music with lyrics underneath. A box with the letter 'C' is placed above the first measure.

132

ἵ_ τε_ τε_ ε_ κ_ ρ_ θα_ ρα_ ε_ ς_ ω_ ψ_ ἐ_ βο_ λ_

Detailed description: This block contains the second musical staff, starting at measure 132. It continues the melody from the previous staff. The lyrics are written below the notes.

140

ε_ ς_ χω_ υ_ υο_ ος:

Detailed description: This block contains the third musical staff, starting at measure 140. It continues the melody. The lyrics are written below the notes.

148 ♩=100

χε_ π_ ω_ ο_ ρ_ τ_ η_ ς_ η_ ς_ ε_ ρ_ ι_ υ_ πο_ ρ_ ο_ νε_ σε_

Detailed description: This block contains the fourth musical staff, starting at measure 148. The tempo is marked as ♩=100. The staff contains eight measures of music with lyrics underneath.

156

β_ ω_ ν_ ε_ ς_ χ_ ο_ λ_ ο_ ζ_ ζ_ ε_ ν_

Detailed description: This block contains the fifth musical staff, starting at measure 156. It continues the melody. The lyrics are written below the notes.

163

ζ_ αν_ ψ_ τα_ ς_ νι_ ε_ β_ νη_ νο_ υ_ β_

Detailed description: This block contains the sixth musical staff, starting at measure 163. It continues the melody. The lyrics are written below the notes.

170 **D** ♩=90

ἀγ_ κ_ ι_ υ_ ε_ πι_ υα_ ε_ τ_ ο_ ρ_ Ν_ κα_ π

Detailed description: This block contains the seventh musical staff, starting at measure 170. It features a treble clef, a key signature of one flat (B-flat), and a common time signature (C). The tempo is marked as ♩=90. A box with the letter 'D' is placed above the first measure. The staff contains eight measures of music with lyrics underneath.

178

ἵ_ τε_ τε_ ε_ κ_ ρ_ θα_ ρα_ ε_ ς_ ω_ ψ_ ἐ_ βο_ λ_

Detailed description: This block contains the eighth musical staff, starting at measure 178. It continues the melody. The lyrics are written below the notes.

186

ε_ ς_ χω_ υ_ υο_ ος:

Detailed description: This block contains the ninth musical staff, starting at measure 186. It continues the melody. The lyrics are written below the notes.

Ἀτα Παρθένος

4

194 $\text{♩} = 100$

ἄε εὐεῖνι εἶδον ἅπι οὔρο

203

ἦ πωβῶ παρθένος

209

ἑψαζον ἄα ε

214 **E** $\text{♩} = 90$

ἀε κί ἄ ἐπι ἄ τιοῦ ἦ κα π

222

ἦ τε τε εἰ κρ θα ρα εἰ ω ῶ ἐ βο λ

230

εἰ ἄω ἄ α ος:

238 $\text{♩} = 100$

ἄε οὔνωτ πε Ποσ εἰ σμα ρωστ

246

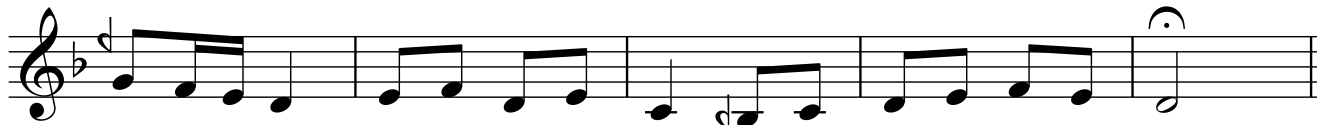
ε ἄαω ἄεν

254

πωβῶ Πεννοῦτ ἑξεν τεε

Ἀγα Παρθένος

258



τῶσ' _

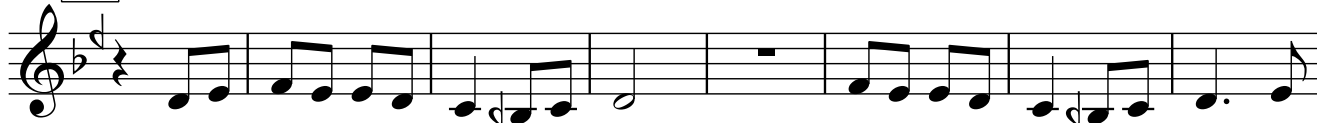
263

F

$\text{♩} = 90$

εἶ _

ῥ



ἀγ _

κ ι υ _

ε _

π ι _

ῥα

σοσ' _

ν _

κα

π

271



ἴ _

τε

τε _

εἰ

κ' ῥ

θα _

ρα

ε

εἰ

ω

ψ

ἔ _

βο

λ _

279



εἰ

χω _

υ

μο

ος:

287

$\text{♩} = 100$



ζε _

θαν

τενε

νδρουπι

ερωψ

νιεβ

295



νηατ

ογος

303



ηεκεμοτ

ζεν

ογοτορετ

ντε

ογνοτ

β

310

G

$\text{♩} = 90$



ἀγ _

κ ι υ _

ε _

π ι _

ῥα

ψαψ

ν _

κα

π

318



ἴ _

τε

τε _

εἰ

κ' ῥ

θα _

ρα

ε

εἰ

ω

ψ

ἔ _

βο

λ _

Ἀγα Παρθένος

6

326

εϛ χω μ μο ος:

334

♩=100
χε πι τωϛ ντε φϛ πι τωϛ ετκε πι

343

ωϛτ πι τωϛ πωβω βης

351

πι τωϛ ετκενι ωϛ τ

358

H ♩=90
αϛ κι ω ε πι ωα ω ωην ν κα πι

366

ν τε τε ϛ κϛ θα ρα ε ϛ ω ψ ε βο λ

374

εϛ χω μ μο ος:

382

♩=100
χε νεϛ ϛενϛ ζεν νιτωϛ ε

390

ϛ λ Ρος πωβω

Ἀγαθὴ Παρθένος

397

Μει νηπιγγλη ντε σιω ν

404 **I** ♩=90

ακ κ ι ω ε πι ωα ψ ιτ ν κα π

412

ν τε τε κ ρ θα ρα ε ς ω υ ε βο λ

420

ες χω υ ω ος:

428 **J** ♩=100

χε αρ σαχι εσβητ νθαν εβηοτ

437

ες ται ηοςτ

444

πωβω ντε φ τ

450 **J** ♩=90

ακ κ ι ω ε πι ωα ωητ ν κα π

458

ν τε τε κ ρ θα ρα ε ς ω υ ε βο λ

Ἀγα Παρθένος

466

εἰς χω... μ μὸ... ος:

474

♩=100
χε... α Πορ σωτη Ν...

482

Σιων... αἰσωτη πωβω

488

μμὸς εὐμα Ν ὡπι να... ς